

Visual Schedule

The goal of the visual schedule is to provide pre-visit information so that you can personalize your visit to meet the needs of your child or loved one. If you use a removable adhesive (such as Velcro), the tool can also provide flexibility for altering your schedule during the visit if needed.

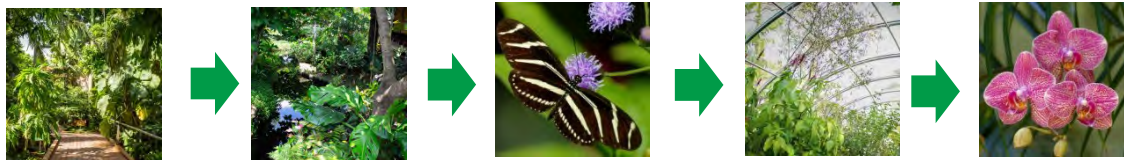
Instructions:

1. Print out pages 3-7 out on a color printer.
2. Using a pair of scissors, cut out the **Garden Icons** and choose which gardens you will visit. There are also cards for food and bathroom breaks and several blank cards for you to create your own.
3. If you desire flexibility during your visit, attach a removable adhesive, such as Velcro, to the back of the icons. If not, use a glue stick to glue icons to paper.
4. On the **Schedule** page, attach the cards to the page in the order that you will visit them.
5. If Velcro is used, you can move the icons to the **All Done** page after you have visited them.

Example Routes

Route 1: Nearby Navigator (30 minutes – 1.5 hours)

Enjoy the Children's Garden, Butterfly House, and the Orchid Garden for exploration near the entrance/exit.



Route 2: Sensory Seeker (45 minutes – 2 hours)

Discover the sensory experiences of the Children's Garden, Butterfly House, Asian Garden, and Enabling Garden.



Route 3: Plant Pathfinder (1 hour- 2.5 hours)

Explore diverse plants from around the globe by following this looped path through the featured gardens.



Note: All routes pass through Kathryn's Garden and Irma's Garden.

Which gardens will we visit to today?



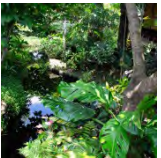
Kathryn's Garden



River of Grass



Orchid Garden



Irma's Garden



Florida Garden



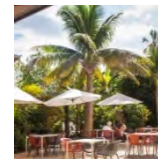
The Preserve



Children's Garden



Idea Garden



Fogg Café



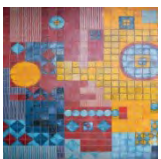
Butterfly House



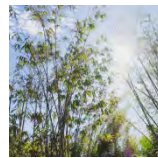
Enabling Garden



Garden Shop



Brazilian Garden



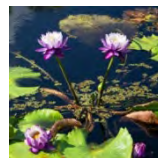
Asian Garden



Restroom



Caribbean Garden

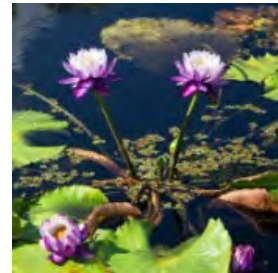
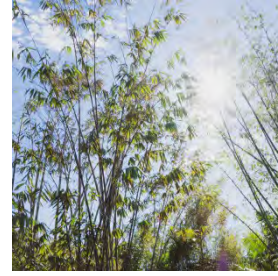
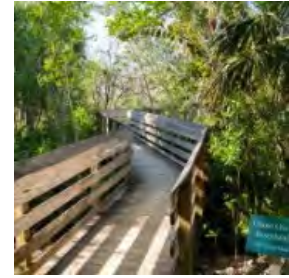
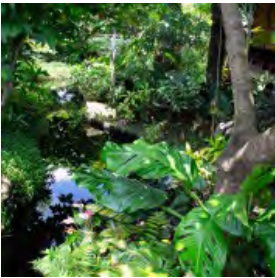
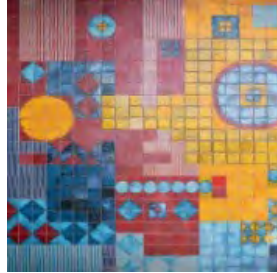


Water Garden



Quiet Space

Print and Cut Out Garden Icons



Print and Cut Out Garden Icons



Create Your Own!

Create Your Own!



Create Your Own!

Create Your Own!



Create Your Own!

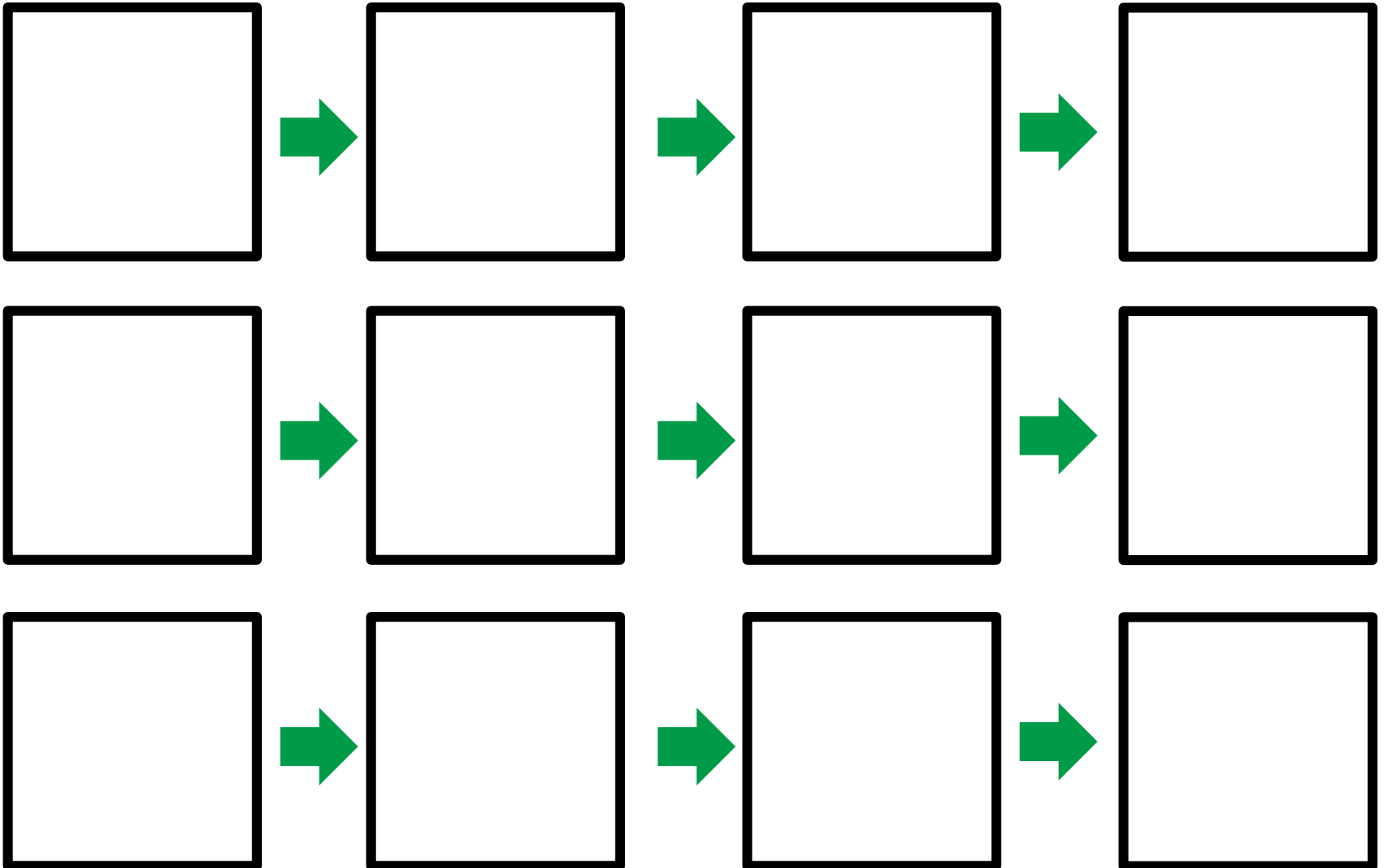
Create Your Own!



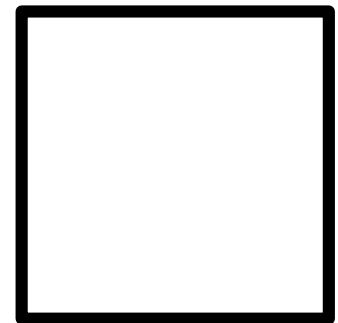
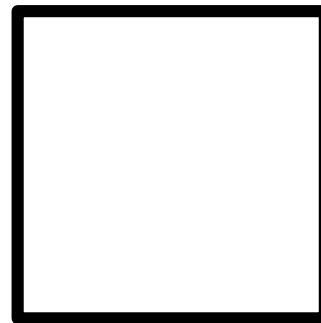
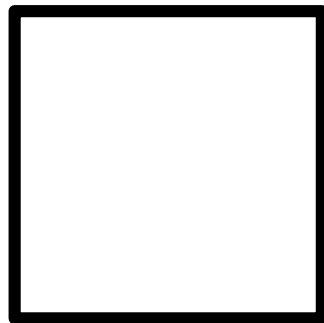
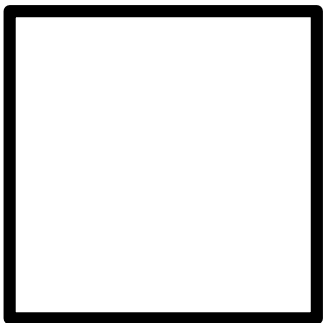
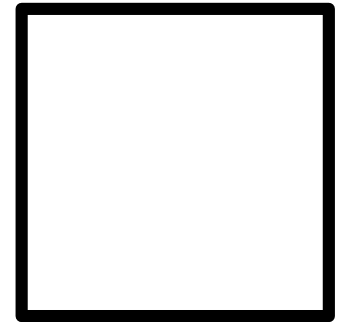
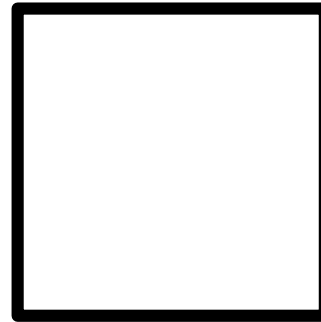
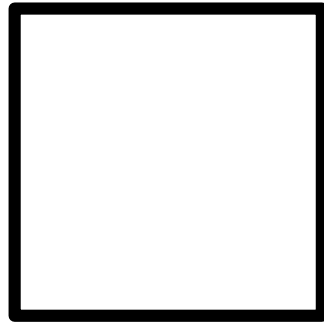
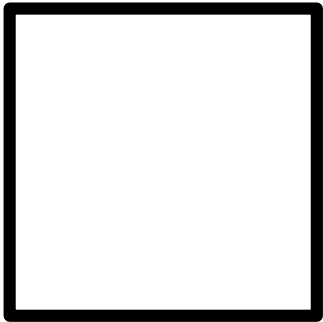
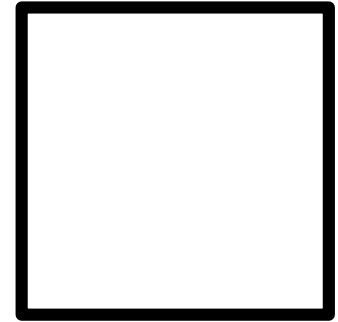
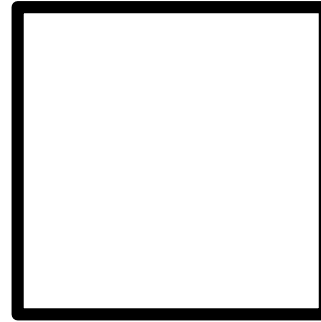
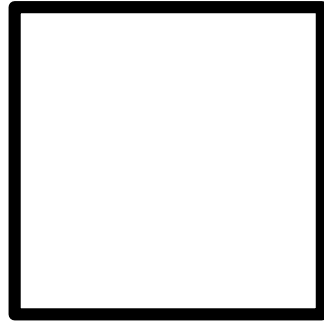
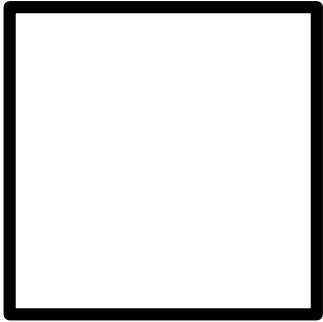
Create Your Own!

Create Your Own!

Schedule



All Done



Naples Botanical
GARDEN



Florida's First Choice for Autism Support



Naples Botanical Garden has collaborated with the Center For Autism & Related Disabilities at the University of South Florida to provide this pre-visit tool.