

Naples Botanical
GARDEN

HORTICULTURE CAMPUS

HORTICULTURE CAMPUS

A state-of-the-art Horticulture Campus is vital to the future of Naples Botanical Garden and our ability to care for our current display gardens, grow our living collections, collect and exchange seeds and cuttings with garden colleagues around the world, develop as a teaching campus, serve as a resource to our local community and expand our conservation leadership with climatically similar gardens in Latin America and the Caribbean.



Architectural renderings provided by:



FUNDING OPPORTUNITIES

With your support, this campus can propel Naples Botanical Garden to the international stage. It expands our growing space 10-fold and adds the infrastructure needed to become a major player in subtropical horticulture, education, research, conservation, and storm and climate resiliency. The 2019-2020 season marks our 10th anniversary; the new horticulture facilities will advance the Garden from start-up to a fully realized botanical operation.

Contact Cindy Learned at 239.325.1927 or clearned@naplesgarden.org to learn how you can be involved.

PHASE 1

Recycling Center
10,000 sq ft

PHASE 2

Greenhouse Complex
22,000 sq ft

- Potting House 1,000 sq ft
- Propagation House 4,300 sq ft
- Greenhouse 6,400 sq ft
(2 bldg. 3,200 sq ft each)
- Shade House 10,000 sq ft

Sun Nursery
43,000 sq ft

PHASE 3

Horticulture Operations Center
10,800 sq ft

- Office Building 5,000 sq ft
- Operations Building 3,600 sq ft

PHASE 1

RECYCLING
CENTER
10,000 SQ FT





RECYCLING CENTER 10,000 SQ FT

Nothing goes to waste at the Garden. Our new Recycling Center, which is currently funded and underway, creates an efficient, durable, high-capacity storage system for the gravel, shells, mulch, soil and other materials we use and reuse on our grounds. The area, paved with reinforced concrete, will also serve as a home to our grinder, affectionately known as "The Beast," operated daily to churn our copious plant debris.



Progress as of 6/19/19

PHASE 2

GREENHOUSE
COMPLEX
22,000 SQ FT

SUN NURSERY
43,000 SQ FT



“As we collaborate with other gardens to conserve rare plants, we can meet current industry standards and be the innovators for new ones.”

– Nick Ewy,
Director of Collections

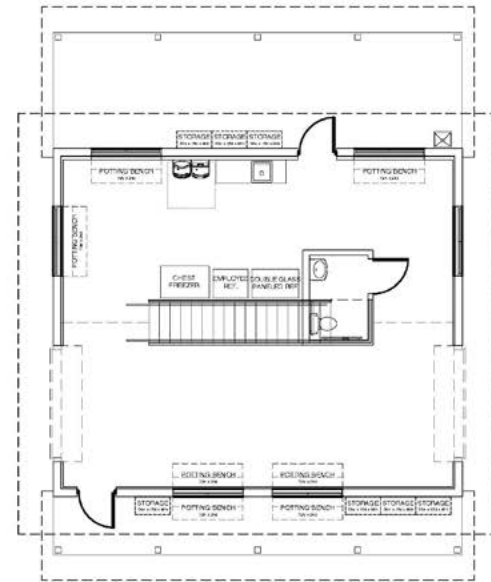
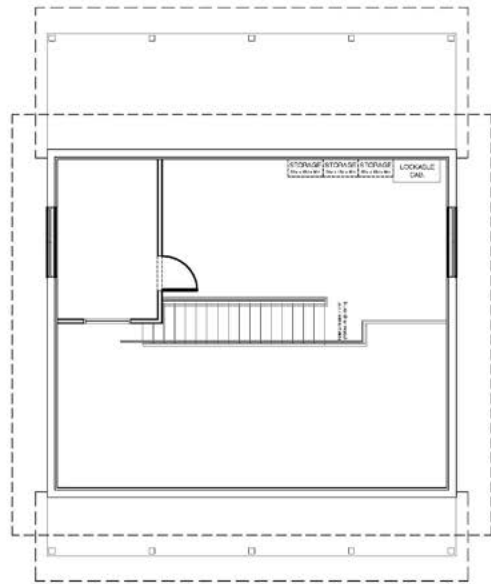
GREENHOUSE COMPLEX 22,000 SQ FT

The Greenhouse Complex is the heart of the Horticulture Campus. Covering 22,000 square feet, it will consist of five separate structures to manage the growth of plants from seed to maturity. This complex also will provide the space needed to manage the accession of all seeds, plants, and trees in our collection. Covered structures such as the Greenhouse will protect smaller plants from excess sun, rain or cold, while the Sun Nursery, covering 43,000 square feet, will nurture plants that thrive in full sun or are too large for the Shade House.



Current Orchid House, 1,700 square feet



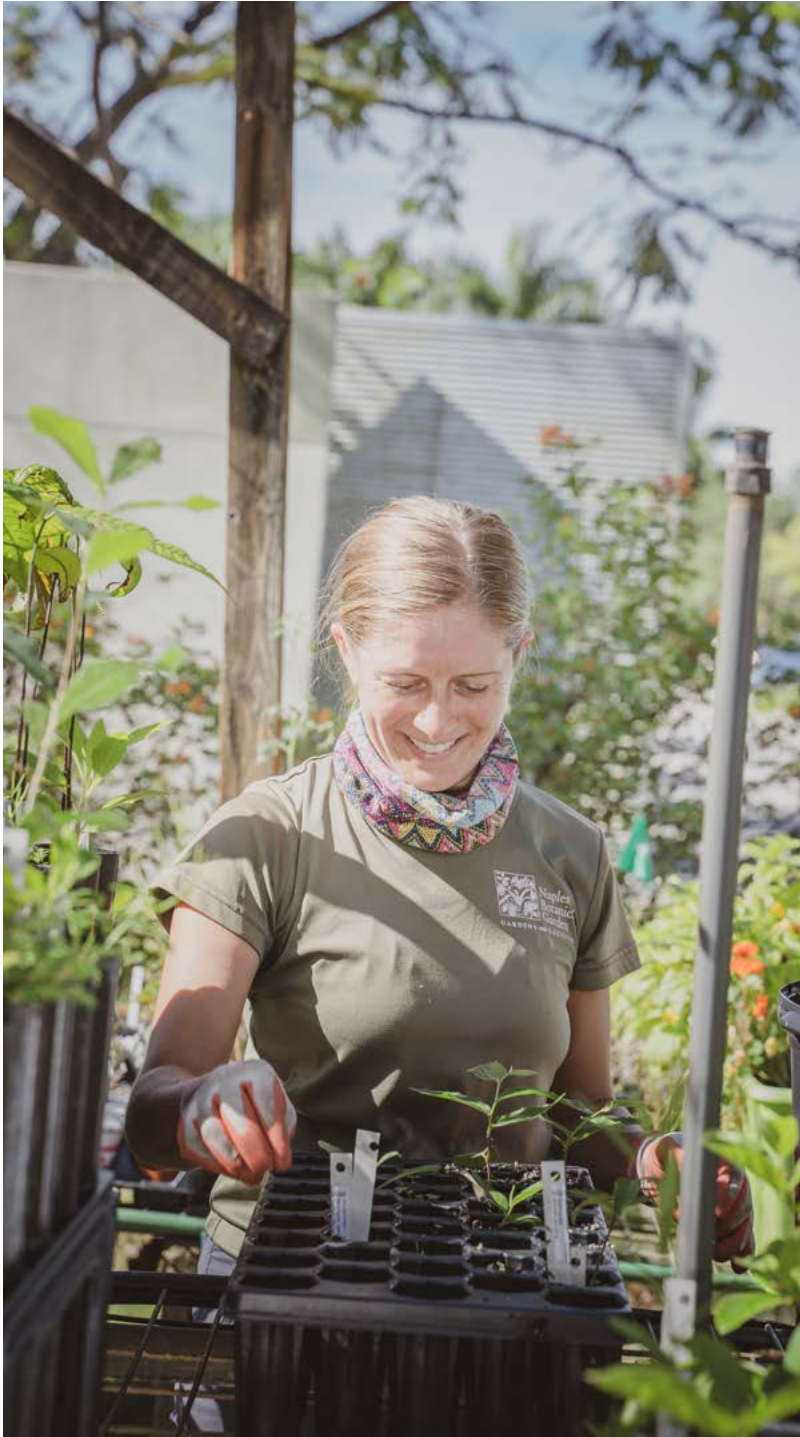


GREENHOUSE COMPLEX

POTTING HOUSE 1,000 SQ FT

Life starts in the Potting House where horticulturalists plant seeds and cuttings that ultimately will be moved to the Propagation House. The new potting facility includes a sterilization space and eight workstations (we currently have one), adding to our capacity and allowing staff to designate stations for different plant types. Demonstrations and workshops can take place here, advancing our educational mission. This area also contains an office for the nursery manager and storage for propagation materials.





GREENHOUSE COMPLEX

PROPAGATION HOUSE 4,300 SQ FT

In this building, the planted seeds and tiny cuttings are encouraged to take root and grow. Two zones allow for controlled temperature and precipitation (fog or mist) that can mimic specific natural environments. Plants stay here until they reach appropriate sizes and levels of maturity, and then move to the Greenhouse or Shade House.



GREENHOUSE COMPLEX

GREENHOUSE

6,400 SQ FT

(2 BLDG. 3,200 SQ FT EACH)

These buildings will house the Garden's orchid collection, permanent scientific plant collections, and rare and endangered plants that are being grown for conservation projects. Plants move from here to the Shade House, Sun Nursery, or main garden. Some will go directly to collections in other gardens.

Current Orchid House, 1,700 square feet

GREENHOUSE COMPLEX

SHADE HOUSE 10,000 SQ FT

Some plants don't need the protection of a greenhouse but do need controlled amounts of light. This steel structure is covered by high-grade mesh that imitates specific natural conditions. Like the greenhouse buildings, the Shade House will house material for planting in the main garden, scientific plant collections, and plants for conservation projects. During rare cold snaps, plants can be moved in here and a plastic sheet installed over the roof to provide cold protection.



Chicago Botanic Garden



“This new facility – combined with our ability to grow collections from the tropical world outdoors and among nature – will allow us to make huge strides for the biodiversity of the Garden and Caribbean Basin.”

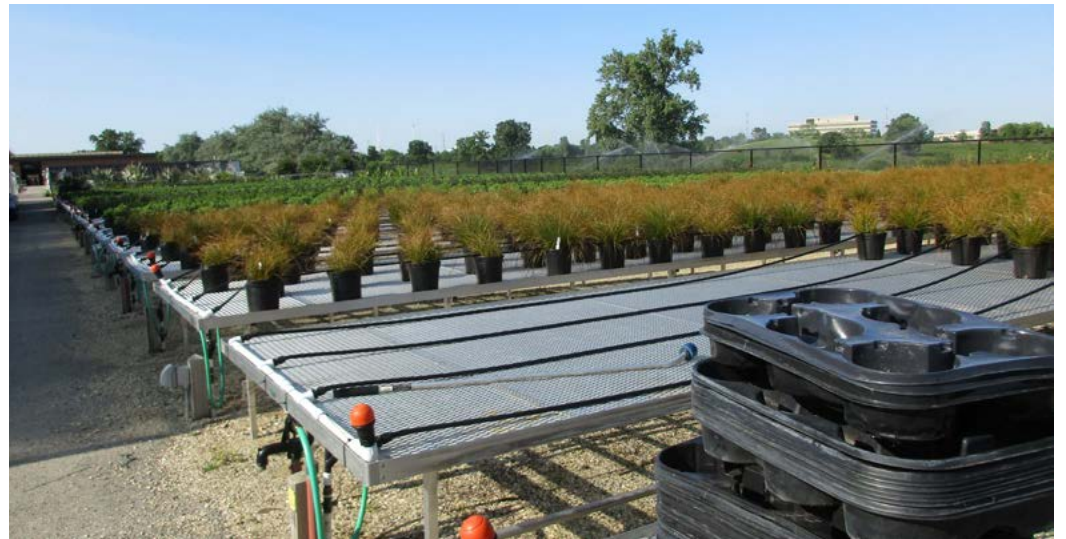
– Brian Galligan,
Vice President of Horticulture

Current Holding Shade House, 600 square feet



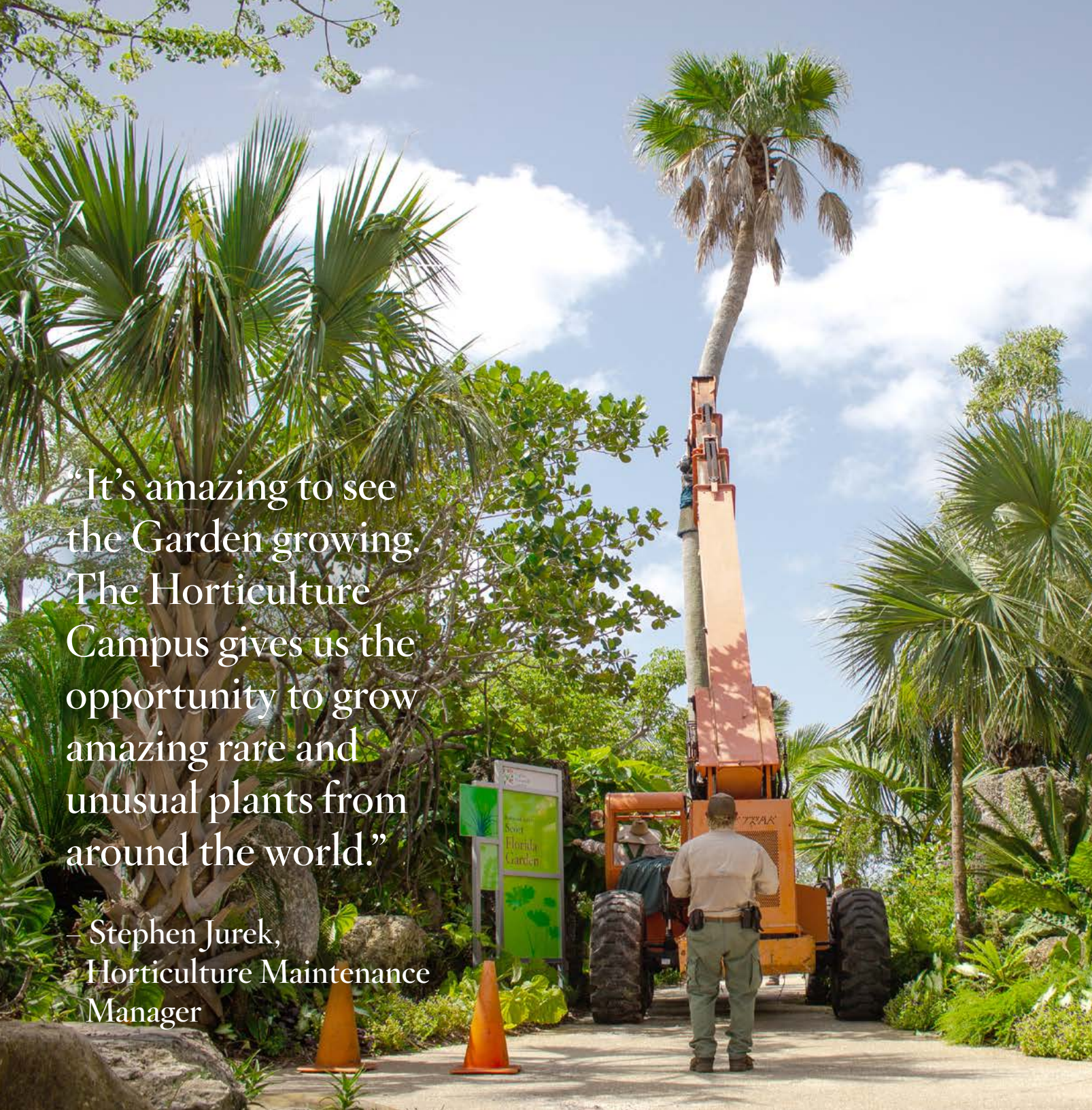
SUN NURSERY 43,000 SQ FT

The Sun Nursery will nurture plants that thrive in full sun. The irrigation system will be able to provide several zones of watering for various plants. This area will house trees, large plants, and other items that need to “harden off” before moving into the main garden. Decorative annuals will also be delivered and stored here for annual seasonal rotations of color.



“It’s amazing to see the Garden growing. The Horticulture Campus gives us the opportunity to grow amazing rare and unusual plants from around the world.”

– Stephen Jurek,
Horticulture Maintenance
Manager



PHASE 3

HORTICULTURE
OPERATIONS
CENTER
10,800 SQ FT





HORTICULTURE OPERATIONS CENTER 10,800 SQ FT

From heavy machinery and shovels to desks and staplers, the two buildings that make up Phase 3 of the project will provide the space needed for our growing horticulture staff and the tools that support their work. This new complex promotes greater efficiency and collaboration by unifying our horticultural team, currently split among multiple buildings, and moving them to an area that is more accessible to the designed gardens and natural areas than their current workspace.



HORTICULTURE OPERATIONS CENTER
OFFICE BUILDING
5,000 SQ FT

The Office Building will house the staff offices, common areas, and break room, as well as a designated space for volunteers. The building provides a much-needed laboratory for cultivation, seed banking and research on how to grow and store plants. Windows will allow staff, volunteers, and tour groups to see what is happening in the lab.



HORTICULTURE OPERATIONS CENTER
OPERATIONS BUILDING
3,600 SQ FT

The Operations Building will house the Garden's equipment and materials.





THANK YOU!

Naples Botanical
GARDEN

4820 Bayshore Drive | Naples, FL 34112
239.643.7275 | naplesgarden.org